

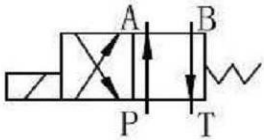


# Magnetventile

Falls der von Ihnen gewünschte Artikel nicht aufgeführt ist,  
stehen wir Ihnen gerne mit Rat und Tat zur Verfügung

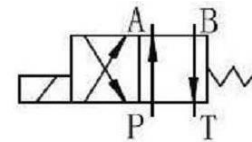
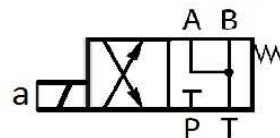
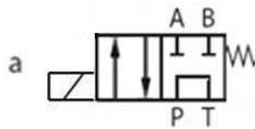
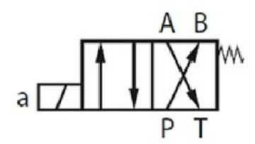
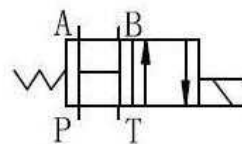
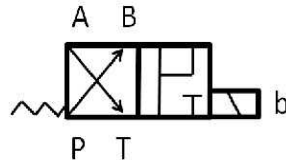
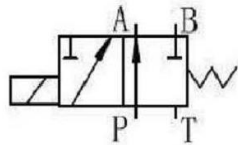
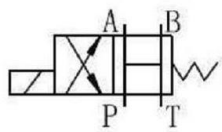
## Magnetventile 4/3 Wege NG04

Bestell-Nr.	Durchfluss l / min	PN bar	Spannung V		
Ventil 4/3 NG04	20	250	12		



## Magnetventile 4/2 Wege NG06 / 90I

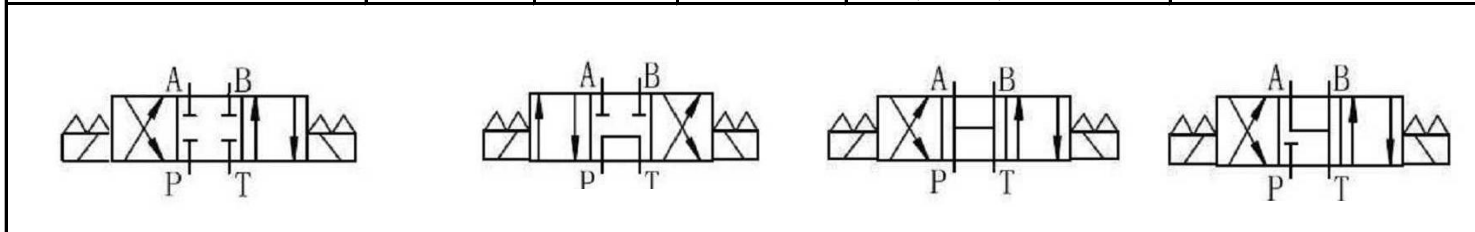
Bestell-Nr.	Durchfluss l / min	PN bar	Spannung V		
Ventil 4/2 NG6 / 90I	90	350	12	<p><b>Lochabstand 40,5 x 32,5 x 31 mm</b></p>	
Ventil 4/2 NG6 / 90I	90	350	24		
Ventil 4/2 NG6 / 90I	90	350	110		
Ventil 4/2 NG6 / 90I	90	350	230		





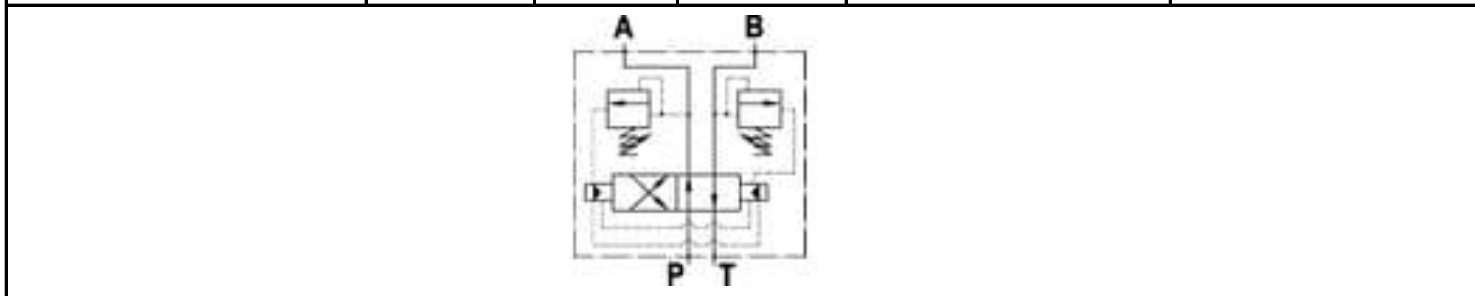
**Magnetventile 4/3 Wege NG06 / 90l**

Bestell-Nr.	Durchfluss l / min	PN bar	Spannung V		
Ventil 4/3 NG6 / 90l	90	350	12		
Ventil 4/3 NG6 / 90l	90	350	24		
Ventil 4/3 NG6 / 90l	90	350	110		
Ventil 4/3 NG6 / 90l	90	350	230		



**Oszillierventil**

Bestell-Nr.	Innen- gewinde	Druck- bereich	PN bar	Durchfluss l / min	
OZV NG6	3/8"	85-260	400	50	
OZV NG10	3/8"	85-260	400	80	



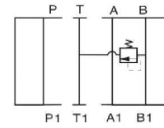
**Druckbegrenzungsventil NG6 in P**

**Druckbegrenzungsventil NG6 in A**

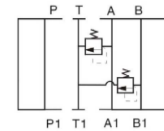




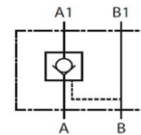
**Druckbegrenzungsventil NG6 in B**



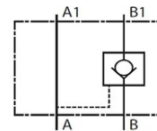
**Druckbegrenzungsventil NG6 in A + B**



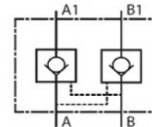
**Rückschlagventil NG6 pilotgesteuert in A**



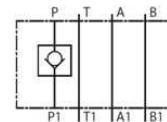
**Rückschlagventil NG6 pilotgesteuert in B**



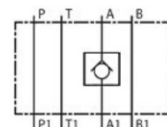
**Rückschlagventil NG6 pilotgesteuert in A + B**



**Rückschlagventil NG6 nicht pilotgesteuert in P**

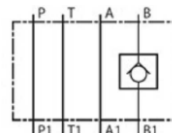


**Rückschlagventil NG6 nicht pilotgesteuert in A**

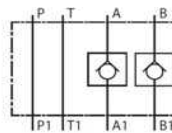




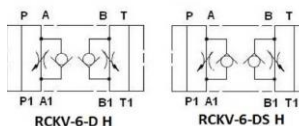
**Rückschlagventil NG6 nicht pilotgesteuert in B**



**Rückschlagventil NG6 nicht pilotgesteuert in A + B**

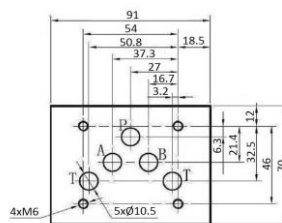


**Drosselventil NG6**

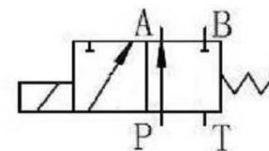
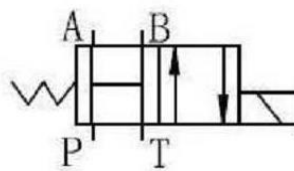
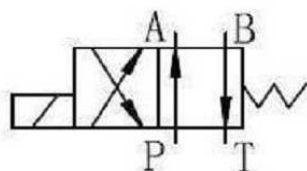
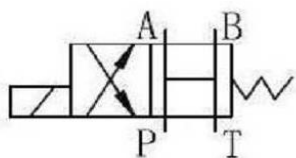


**Magnetventile 4/2 Wege NG 10**

Bestell-Nr.	Durchfluss l / min	PN bar	Spannung V
Ventil 4/2 NG10	120	315	12
Ventil 4/2 NG10	120	315	24
Ventil 4/2 NG10	120	315	110
Ventil 4/2 NG10	120	315	230



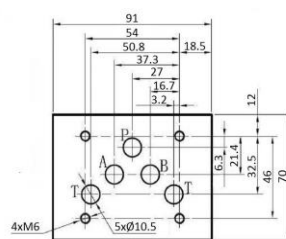
**Lochabstand  
46 x 54mm**



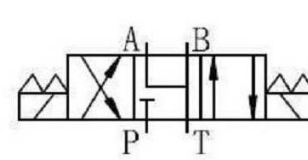
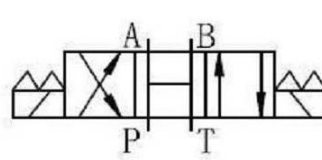
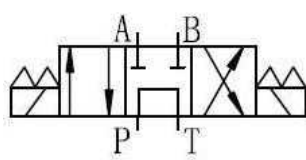
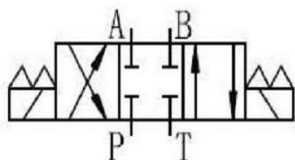


### Magnetventile 4/3 Wege NG 10

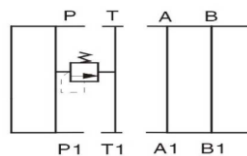
Bestell-Nr.	Durchfluss l / min	PN bar	Spannung V
Ventil 4/3 NG10 / 90I	90	315	12
Ventil 4/3 NG10 / 90I	90	315	24
Ventil 4/3 NG10 / 90I	90	315	110
Ventil 4/3 NG10 / 90I	90	315	230
Ventil 4/3 NG10 / 100I	100	315	12
Ventil 4/3 NG10 / 100I	100	315	24
Ventil 4/3 NG10 / 100I	100	315	110
Ventil 4/3 NG10 / 100I	100	315	230
Ventil 4/3 NG10 / 120I	120	315	12
Ventil 4/3 NG10 / 120I	120	315	24
Ventil 4/3 NG10 / 120I	120	315	110
Ventil 4/3 NG10 / 120I	120	315	230



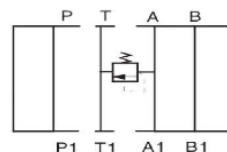
**Lochabstand  
46 x 54mm**



### Druckbegrenzungsventil NG10 in P

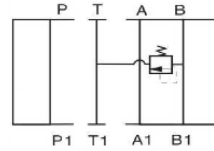


### Druckbegrenzungsventil NG10 in A

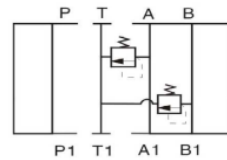




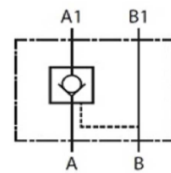
**Druckbegrenzungsventil NG10 in B**



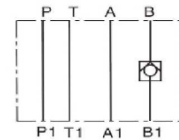
**Druckbegrenzungsventil NG10 in A + B**



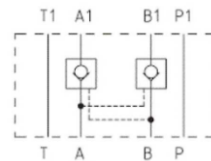
**Rückschlagventil NG10 pilotgesteuert in A**



**Rückschlagventil NG10 pilotgesteuert in B**

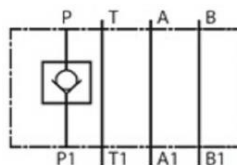


**Rückschlagventil NG10 pilotgesteuert in A + B**

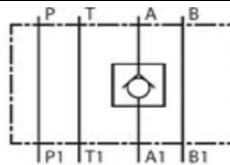




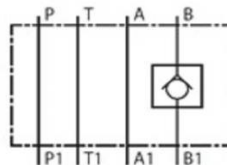
**Rückschlagventil NG10 nicht pilotgesteuert in P**



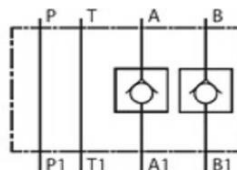
**Rückschlagventil NG10 nicht pilotgesteuert in A**



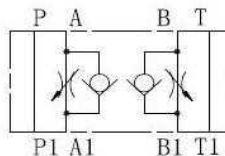
**Rückschlagventil NG10 nicht pilotgesteuert in B**



**Rückschlagventil NG6 nicht pilotgesteuert in A + B**



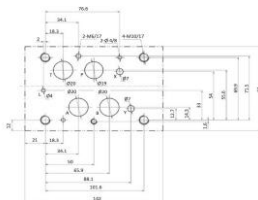
**Fussmengen Regelventil NG10 in A+ B mit Rückschlagventil**



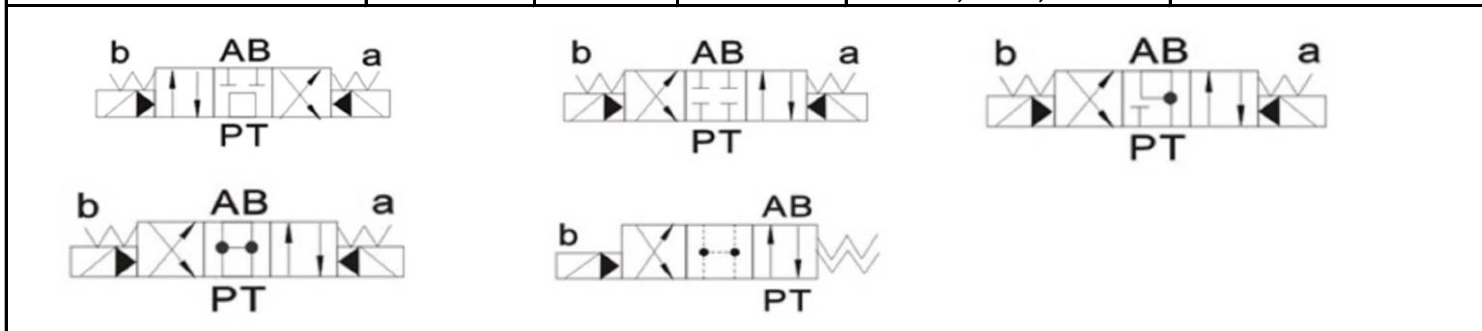


**Magnetventile 4/3 Wege NG 16**

Bestell-Nr.	Durchfluss l / min	Druck max. bar	Spannung V
Ventil 4/3 NG16	300	350	12
Ventil 4/3 NG16	300	350	24
Ventil 4/3 NG16	300	350	110
Ventil 4/3 NG16	300	350	230



**Lochabstand**  
**101,6 x 69,9mm**





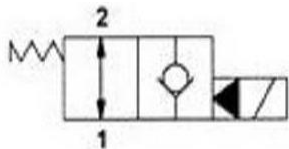
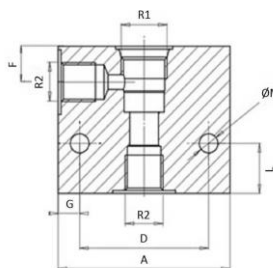


## Elektromagnetventil

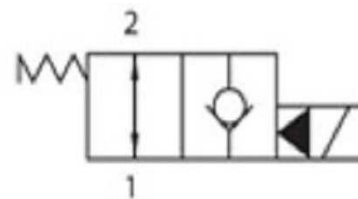
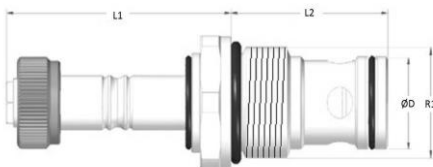
Falls der von Ihnen gewünschte Artikel nicht aufgeführt ist,  
stehen wir Ihnen gerne mit Rat und Tat zur Verfügung

### Elektromagnetventil 2/2 Wege, beide Richtungen, normal offen

Bestell-Nr.	G	G	Druckfluss l / min
2/2 Wege Ventil 3/8" / 12V	3/4"-16 UNF	3/8" BSP	40
2/2 Wege Ventil 3/8" / 24V	3/4"-16 UNF	3/8" BSP	40
2/2 Wege Ventil 3/8" / 230V	3/4"-16 UNF	3/8" BSP	40
2/2 Wege Ventil 1/2" / 12V	7/8"-14 UNF	1/2" BSP	60
2/2 Wege Ventil 1/2" / 24V	7/8"-14 UNF	1/2" BSP	60
2/2 Wege Ventil 1/2" / 230V	7/8"-14 UNF	1/2" BSP	60
2/2 Wege Ventil 3/4" / 12V	1 1/16"-16 UN	3/4" BSP	120
2/2 Wege Ventil 3/4" / 24V	1 1/16"-16 UN	3/4" BSP	120
2/2 Wege Ventil 3/4" / 230V	1 1/16"-16 UN	3/4" BSP	120



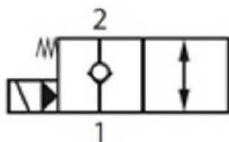
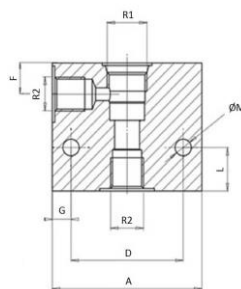
### Patronen-Ventil, normal offen, pilotgesteuert



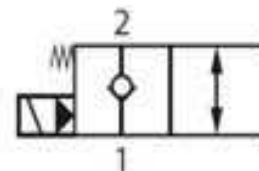
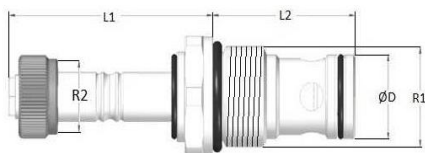


**Elektromagnetventil 2/2 Wege,  
beide Richtungen, normal geschlossen**

Bestell-Nr.	G	G	Druckfluss l / min
2/2 Wege Ventil 3/8" / 12V	3/4"-16 UNF	3/8" BSP	40
2/2 Wege Ventil 3/8" / 24V	3/4"-16 UNF	3/8" BSP	40
2/2 Wege Ventil 3/8" / 230V	3/4"-16 UNF	3/8" BSP	40
2/2 Wege Ventil 1/2" / 12V	7/8"-14 UNF	1/2" BSP	60
2/2 Wege Ventil 1/2" / 24V	7/8"-14 UNF	1/2" BSP	60
2/2 Wege Ventil 1/2" / 230V	7/8"-14 UNF	1/2" BSP	60
2/2 Wege Ventil 3/4" / 12V	1 1/16"-16 UN	3/4" BSP	120
2/2 Wege Ventil 3/4" / 24V	1 1/16"-16 UN	3/4" BSP	120
2/2 Wege Ventil 3/4" / 230V	1 1/16"-16 UN	3/4" BSP	120



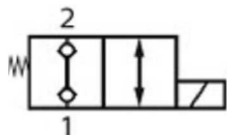
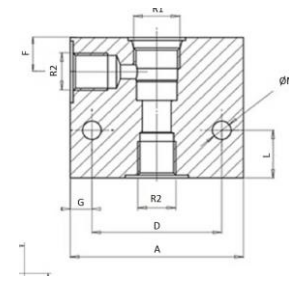
**Patronen-Ventil, normal geschlossen, pilotgesteuert**



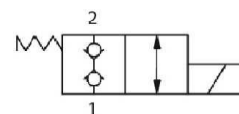
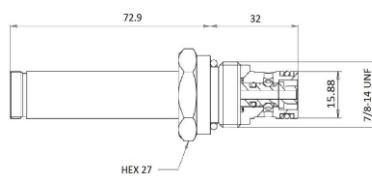
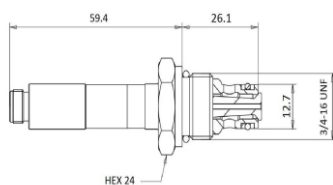


**Elektromagnetventil 2/2 Wege, beide Richtungen, normal geschlossen, mit Doppel-Rückschlagventil**

Bestell-Nr.	G	G	Druckfluss l / min
2/2 Wege Ventil 3/8" / 12V	3/4"-16 UNF	3/8" BSP	40
2/2 Wege Ventil 3/8" / 24V	3/4"-16 UNF	3/8" BSP	40
2/2 Wege Ventil 3/8" / 230V	3/4"-16 UNF	3/8" BSP	40
2/2 Wege Ventil 1/2" / 12V	7/8"-14 UNF	1/2" BSP	60
2/2 Wege Ventil 1/2" / 24V	7/8"-14 UNF	1/2" BSP	60
2/2 Wege Ventil 1/2" / 230V	7/8"-14 UNF	1/2" BSP	60



**Patronen-Ventil, normal geschlossen, mit Doppel-Rückschlagventil**



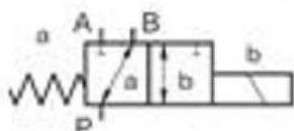


## Umlenkventile

Falls der von Ihnen gewünschte Artikel nicht aufgeführt ist,  
stehen wir Ihnen gerne mit Rat und Tat zur Verfügung

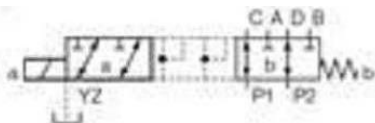
### Umlenkventile 3 Wege 1/2"

Bestell-Nr.	G	Druck max. bar	Druckfluss l /min		
Ventil 3 Wege 1/2" / 12V	1/2" BSP	250	60		
Ventil 3 Wege 1/2" / 24V	1/2" BSP	250	60		



### Umlenkventile 6 Wege 3/8"

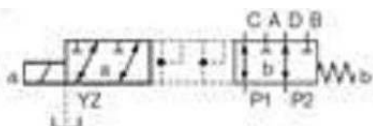
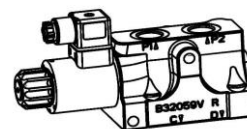
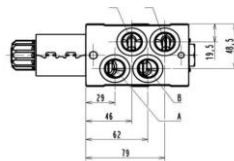
Bestell-Nr.	G	Druck max. bar	Druckfluss l /min		
Ventil 6 Wege 3/8" 12V	3/8" BSP	250	50		
Ventil 6 Wege 3/8" 24V	3/8" BSP	250	50		
Ventil 6 Wege 3/8" 48V	3/8" BSP	250	50		
Ventil 6 Wege 3/8" 110V	3/8" BSP	250	50		
Ventil 6 Wege 3/8" 230V	3/8" BSP	250	50		





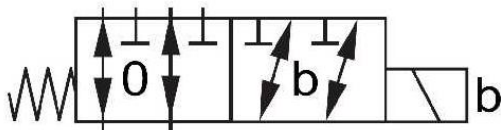
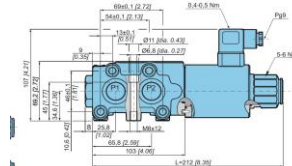
### Umlenkventile 6 Wege 3/8" (NEUES DESIGN)

Bestell-Nr.	G	Druck max. bar	Druckfluss l /min
Ventil 6 Wege 3/8" 12V	3/8" BSP	250	50
Ventil 6 Wege 3/8" 24V	3/8" BSP	250	50
Ventil 6 Wege 3/8" 48V	3/8" BSP	250	50



### Umlenkventile 6 Wege 1/2"

Bestell-Nr.	G	Druck max. bar	Druckfluss l /min
Ventil 6 Wege 1/2" 12V	1/2" BSP	350	90
Ventil 6 Wege 1/2" 24V	1/2" BSP	350	90
Ventil 6 Wege 1/2" 48V	1/2" BSP	350	90
Ventil 6 Wege 1/2" 110V	1/2" BSP	350	90
Ventil 6 Wege 1/2" 230V	1/2" BSP	350	90



### Umlenkventile 8 Wege 3/8"

Bestell-Nr.	G	Druck max. bar	Druckfluss l /min
Ventil 8 Wege 3/8" 12V	3/8" BSP	250	50
Ventil 8 Wege 3/8" 24V	3/8" BSP	250	50
Ventil 8 Wege 3/8" 48V	3/8" BSP	250	50
Ventil 8 Wege 3/8" 110V	3/8" BSP	250	50
Ventil 8 Wege 3/8" 230V	3/8" BSP	250	50

